

MAINSTREAMING:

Incorporating climate change into northern decisions

Mainstreaming goals:

The integration of climate change considerations into institutional planning, projects, decision-making and operational processes

Mainstreaming strategies:

1. Eliminate barriers
2. Increase awareness
3. Use existing processes
4. Build on relationships

Program history:

The *Climate Change Information and Mainstreaming Program* started in 2010 as a partnership between the Yukon Research Centre (YRC) and Yukon government's Climate Change Secretariat.

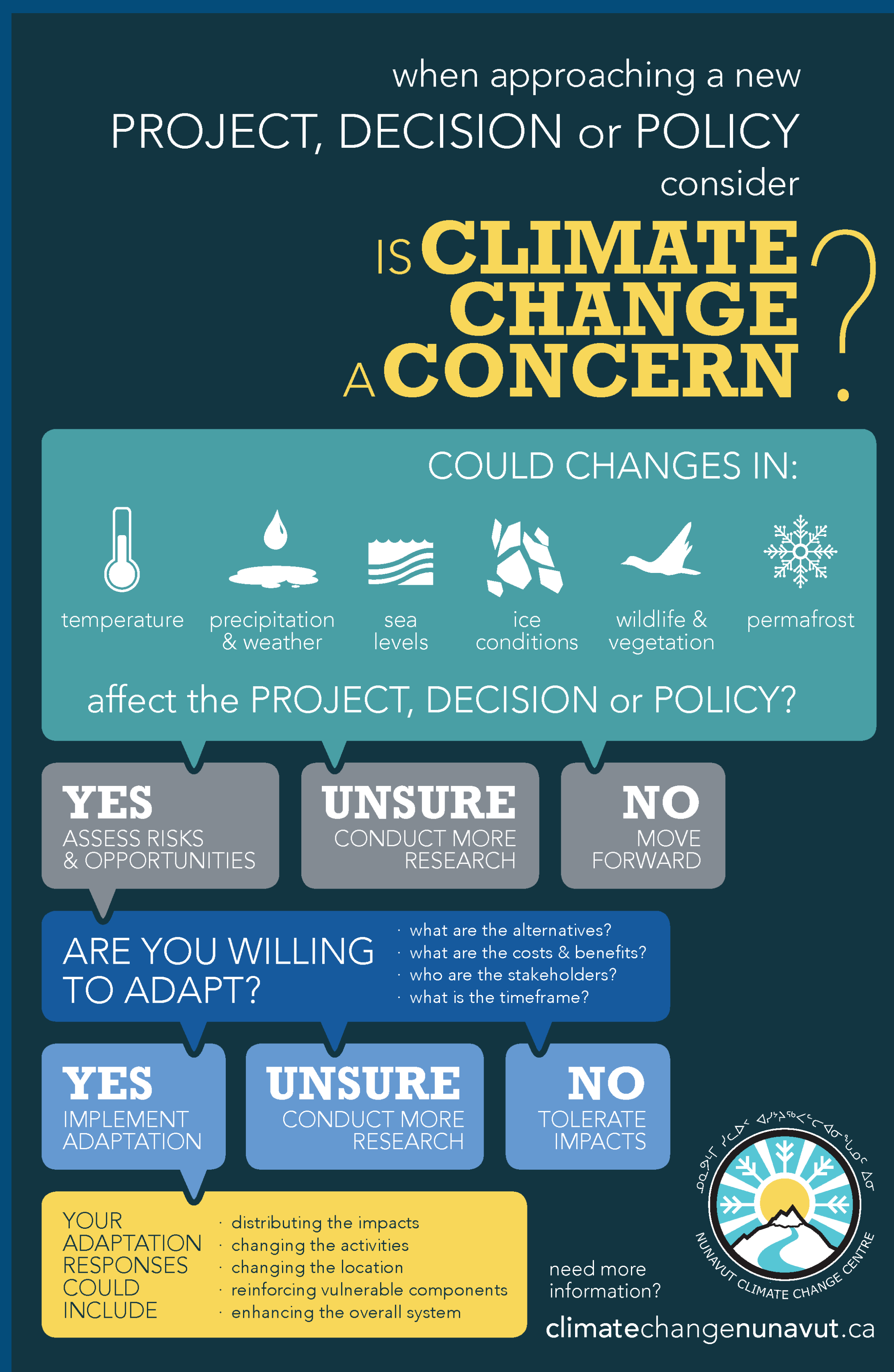
The YRC program coordinator supports Yukon government's work on climate change adaptation and mitigation by working directly with government employees to ensure they have the information and tools they need to integrate climate change into their work.



TAKING ACTION ON CLIMATE CHANGE

1. Eliminate existing or imagined barriers to considering climate change

- Creating tools that bridge the gap between science and policy like this decision-making flow chart created for Government of Nunavut



- Communicating in a way that's accessible and relevant to the audience (open houses, plain language reports)
- Providing technical advice, expertise and information on climate change directly to decision and policy makers

2. Increase awareness around climate change issues



Delivering courses on climate change to key audiences:

- Yukon College and Government of Yukon's *Decision Making for Climate Change* course
- Government of Nunavut's *Climate Change Adaptation for Nunavut Decision Makers* course
- Climate Change 101 short course for industry, schools, and governments
- Public lectures and workshops

3. Leverage existing planning processes

- Incorporating climate change in ongoing planning as opposed to doing a separate planning process (e.g. community plans, wildlife management plans, parks and protected areas planning, etc.)
- Working with departments to identify actions to address climate change and ensuring those are included in departmental plans
- Working with regulatory agencies to include climate change in environmental assessments and regulations



4. Build on relationships and partnerships with other organizations

- Supporting Government of Yukon in the integration of climate change considerations into projects
- Working with Government of Nunavut to create a Nunavut-specific course for decision makers
- Working with Government of Northwest Territories to build tools and identify adaptation costs for northern transportation and mining sectors
- Working with the Pan-Territorial Adaptation Partnership to address northern research priorities and fill knowledge gaps



YUKON RESEARCH CENTRE
Yukon College

Alison Perrin
867.456.8593
aperrin@yukoncollege.yk.ca
yukoncollege.yk.ca/research